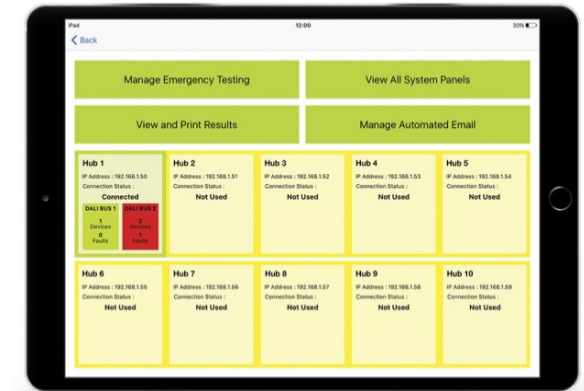


**Product Description**

One-CONNECT™ is a comprehensive DALI based scalable emergency lighting test system. One-CONNECT™ has been designed to provide a flexible, powerful and user-friendly emergency lighting testing and reporting tool. The system allows viewing, printing and emailing of emergency test reports, from a touchscreen panel, enabling easy identification of faults and more efficient maintenance to comply with emergency lighting regulations.

One-CONNECT™ has been designed to be operated and managed via an off-the-shelf Apple iPad™ device. A specially written and designed application is supplied with the system, connecting all DALI emergency devices to form local monitoring groups.

Utilising an intuitive graphical user interface and commissioning system, coupled with a powerful database engine, the One-CONNECT™ system provides an intelligent but simple way to set-up and present the real-time status of all components. Offering easy operation and navigation of the interface, you are able to breakdown the system to view each device individually or the system as a whole.



**System Architecture**

- > A complete One-CONNECT system can comprise of one to eight touchscreen panels.
- > Each touchscreen supports up to 10 DALI Emergency Hubs.
- > Each DALI Hub then has two separate DALI field networks that can hold up to 64 DALI devices.
- > One touchscreen with associated DALI hubs has a capacity to manage up to 1,280 DALI emergency devices.
- > Devices connected to a single touchscreen panel can be allocated to one of 16 manageable testing groups.
- > InWith all 8 touchscreens networked together, a full One-CONNECT system has the potential to accommodate **10,240 DALI emergency devices**.

**Installation Control Panels**

Bespoke lighting control panels can be supplied that are designed with the specific requirements of your project in mind.

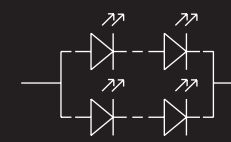
Each control panel will be supplied with the correct equipment that is pre-installed and wired for the relevant power supplies - all completed before despatch to site.

Upon arrival on site, the panel will require fixing onto the wall of the electrical rise/cupboard and to connect the control panel to the mains power, outgoing DALI networks and Ethernet data cables.\*

*\*In situation where multiple hubs using POE (Power Over Ethernet) and/or (WAP) Wireless Access Points are to be fitted in an individual panel, a network switch would normally be provided for the Ethernet Data connections.*



Product specifications may be subject to change without prior notice.



SYSTEM TOPOLOGY

*One-CONNECT is connected via global standard Ethernet TCP/IP network connections. The system can accommodate for either a fully private network or integration into a buildings existing IT infrastructure.*

